

LUD Load Cell

Single Point Load Cell

Protection Class Ip67

Aluminum Construction

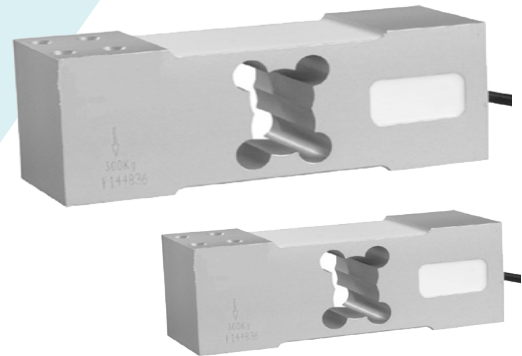
Capacity: 100kg, 150kg, 200kg, 300kg, 500 & 700kgf.

Mode of Connection

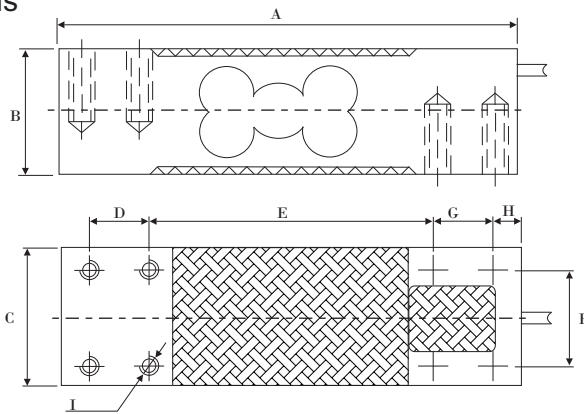
Input+: Red
Input-: Black
Output+: Green
Output-: White

Input Impedance: $410 \pm 10\Omega$

Output Impedance: $350 \pm 10\Omega$



Dimensions



| Capacity (kg) | A | B | C | D | E | E | G | H | I |
|---------------|-----|----|----|----|-----|----|----|-----|--------|
| 100 | 150 | 40 | 40 | 19 | 97 | 30 | 19 | 7.5 | M8 8H |
| 150 | 150 | 40 | 40 | 19 | 97 | 30 | 19 | 7.5 | M8 8H |
| 200 | 150 | 40 | 40 | 19 | 97 | 30 | 19 | 7.5 | M8 8H |
| 300 | 150 | 40 | 40 | 19 | 97 | 30 | 19 | 7.5 | M8 8H |
| 500 | 174 | 64 | 60 | 19 | 122 | 30 | 19 | 7 | M8 8H |
| 700 | 174 | 64 | 60 | 19 | 122 | 30 | 19 | 7 | M10 8H |

Specifications:

| | |
|--------------------------------|----------------------|
| Rated Output (mV/V) | 2.0 ± 0.001 mV/V |
| Total Error | 0.02 % F.S |
| Recommended Excitation Voltage | 5V ~ 12V DC |
| Maximum Excitation Voltage | 15V DC |
| Non-linearity | 0.02 F.S |
| Hysteresis | 0.02 %F.S |
| Non-repeatability | 0.01% F.S |
| Creep | 0.02 %FS/30min |
| Zero Balance | 2 % F.S |
| Operating Temp Range | -20°C ~ +65° C |
| Compensated Temp Range | -10°C ~ +40°C |
| Temp Effect on Load | 0.02 % F.S |
| Temp Effect on Zero | 0.02 % F.S |

Reliable and Rugged! 



Weighing Solution

www.sang-weighing.com
info@sang-weighing.com